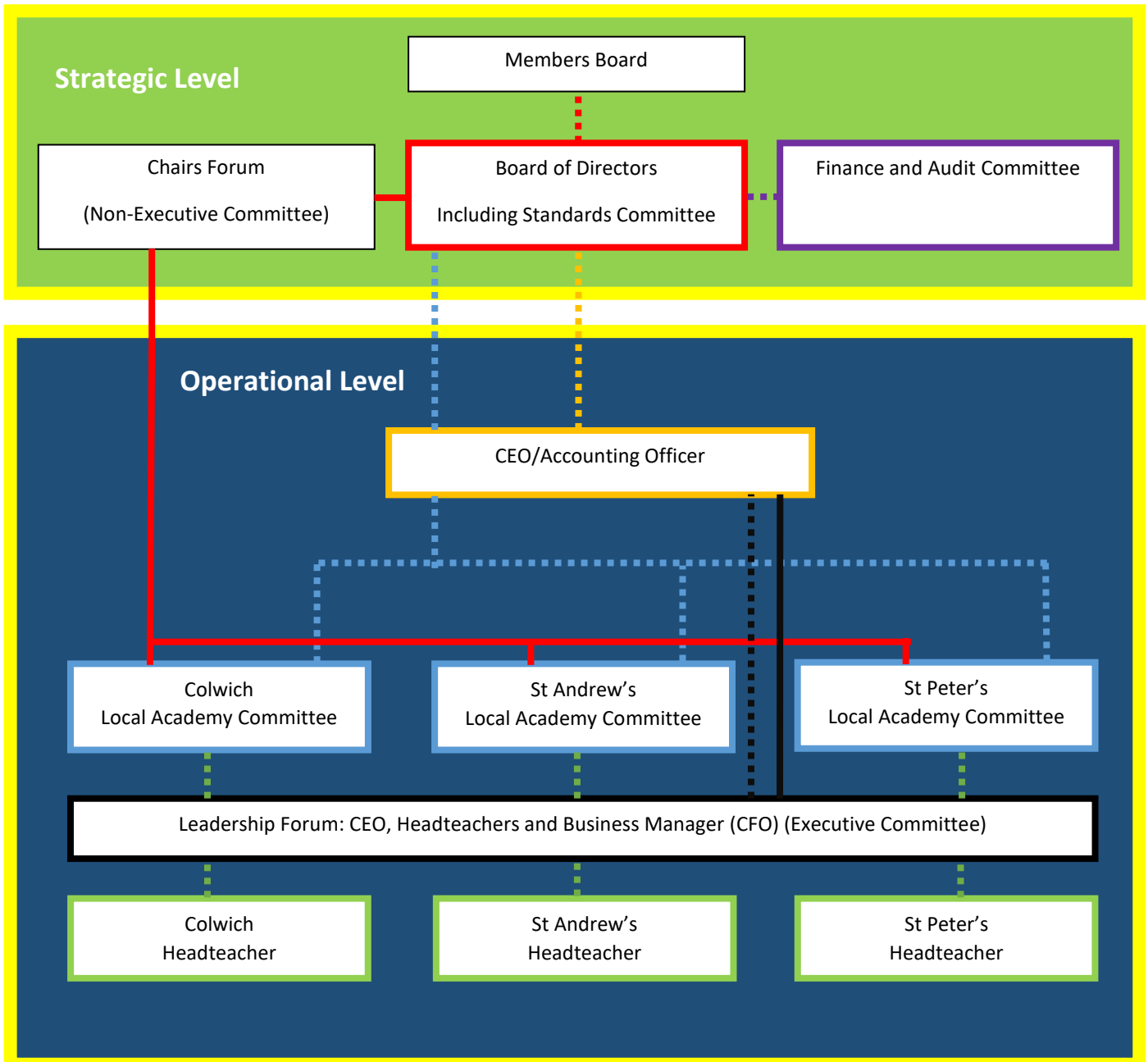










## Mid-Trent MAT Governance And Operations Structure



|   |   |
|---|---|
|   |   |
|  | Headteachers report to their Local Academy Committee  |
|  | Local Academy Committees report to the Board of Directors                                     |
|  | Discussion and information sharing between LAC chairs and the chair of the Board of Directors |
|  | CEO/Accounting Officer reports to the board.  |
|  | Board of Directors report to the Members Board  |
|  | Headteachers/CFO reports to the CEO/Accounting Officer  |
|  | Discussion and information sharing between CEO, Headteachers and Business Manager (CFO)       |
|  | Finance and Audit Committee reports to the Board of Directors                                 |





#### Members

- 4 Members sit on the committee
- 1 Member is a representative of CECET (Church of England Central Education Trust)

#### Directors

- 9 Directors\*
- CEO (ex officio director\*)
- Chief Finance Officer / Business Manager (non voting)

#### Finance And Audit Committee

- 3 Directors (Chair of Board of Directors not to sit on the Audit Committee)
- Chief Finance Officer
- CEO

#### Leadership Forum (Executive Committee)

- CEO
- Headteacher of each school
- Chief Finance Officer/Business Manager

#### Chairs Committee (Non-Executive Committee)

- Chair of the Board of Directors
- Chairs from each Local Governing Body
- CEO

**MAT Vision:** Our vision is always to put the children first. We offer an education of the highest quality, underpinned by Christian values, from beginning to end. We are a family of schools which pool together our expertise, resources and joy for learning to give all our children an education fitting them to be members of the wider community, preparing them for the opportunities, responsibilities and experiences that lie ahead.”

**MAT Motto:** Belief In A Better Future

**MAT Mission statement:** Through the application and practice of Christian values, an ethos of collaboration and innovation and by being responsive to the challenges of modern society; we will maintain and grow a collective of schools which always puts the children first to ensure they receive an outstanding education and develop the knowledge and attributes to be successful, life-long learners. The Trust will provide a safe and secure environment for children and staff to flourish, within which parents feel engaged.